

AVANT-GARDE

3 BEDROOM + FLEX SUITES

LIVE THE ART™
BOUTIQUE RESIDENCES - COURTICE.





LIVE THE ART™

REDEFINING MAIN STREET

Live the art at Mondria 1, a community that is changing the skyline of Toronto's New East Side.

Leave the noise and 24/7 hustle of downtown to the pigeons and wake up to birdsong from your balcony. Breathe deep in country air without sacrificing the ease of city living. Live where stars light up the night sky. Landscaped parks, comfortable coworking spaces, and spectacular views from the rooftop await, with convenient shopping and gourmet dining just steps away.

Come home to the future. Come home to Mondria 1.

THE AVANT-GARDE COLLECTION

THE FUTURE AWAITS.

The largest and most comfortable units in the building belong to the Avant-Garde collection. With square footage that rivals today's semidetached homes, these units offer unparalleled comfort and efficient design that makes it easy to forget you're living in a boutique residence. Penthouses in this collection feature private terraces that more than double the size of your living area, bringing the beauty and fresh air of outdoor living into your daily life.

Full accessibility is part of our promise to you; certain units are designed with the differently-abled in mind, and are located throughout Mondria 1. The Avant-Garde collection: townhome-sized three-bedrooms with an additional flex room.

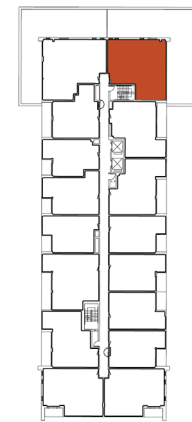


KANDINSKY

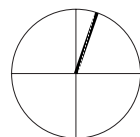
UNIT 515

SUITE 1061 ft²
TERRACE 1296 ft²

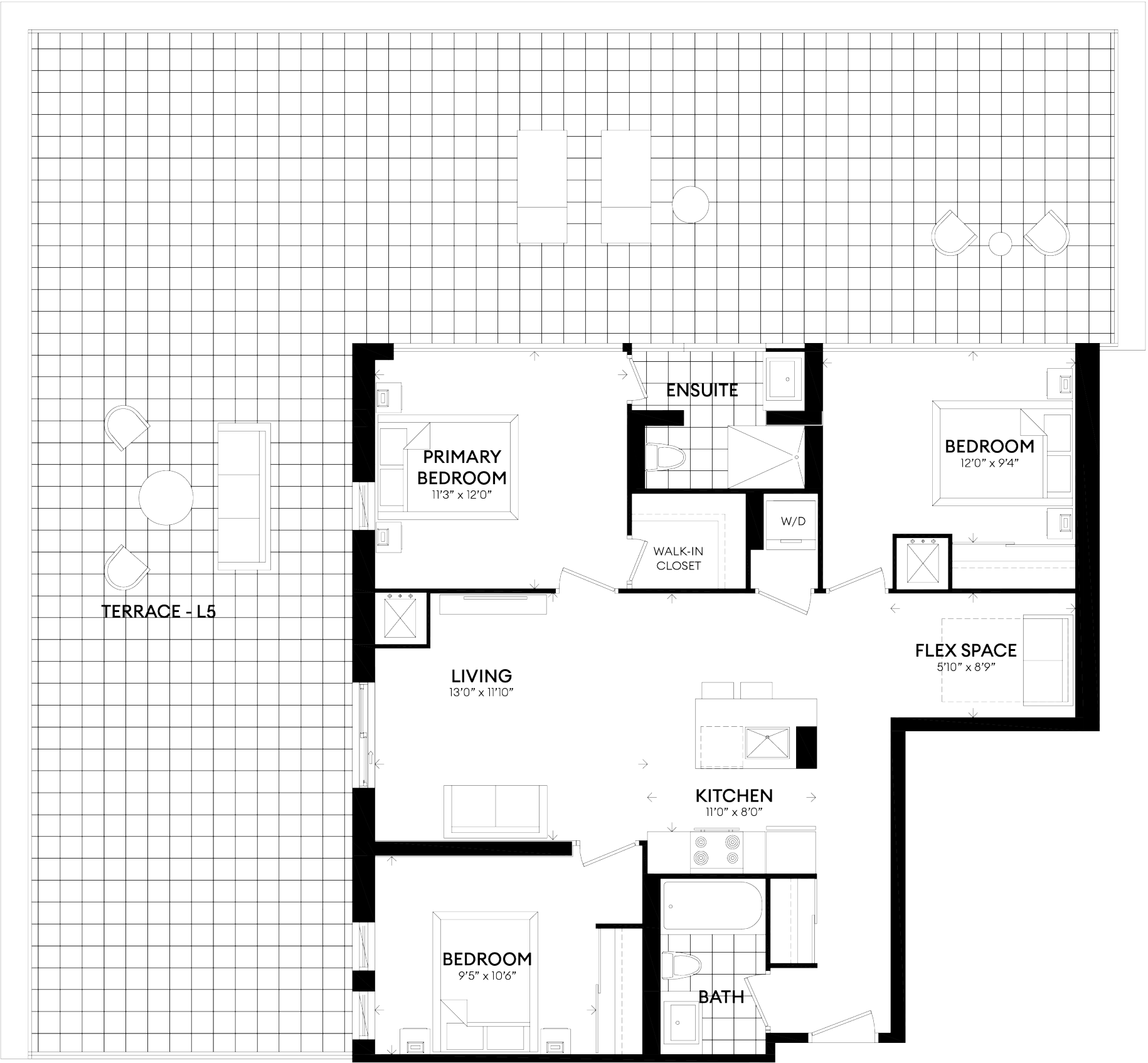
3 BEDROOMS
FLEX SPACE
2 BATHROOMS



LEVEL 5



© 2021 Monde Development Group Inc. Project names and logos are Trademarks of their respective owners. All rights reserved. Building and views not to scale. All dimensions are approximate and subject to normal construction variances. Dimensions may exceed the usable floor area. Some features and finishes herein are upgrades or are for illustrative purposes only and may not be available. Furniture is displayed for illustration purposes only and does not necessarily reflect the electrical plan for the suite. Suites are sold unfurnished. Balcony, terrace, and façade variations may apply. Contact a sales representative for further details. Furniture, BBQs, and planter locations of balconies or terraces are for illustration purposes only and subject to change. Illustrations are artist's concepts only. Mondria 1 address, 1607 King St. E subject to change pending city approvals. Sizes and specifications subject to change without notice. E. & O.E. May 2021

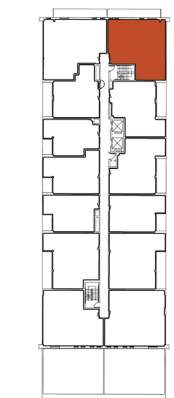


MALEVICH

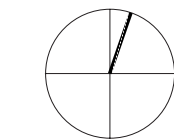
UNIT 612

SUITE 1061 ft²
BALCONY 146 ft²

3 BEDROOMS
FLEX SPACE
2 BATHROOMS



LEVEL 6



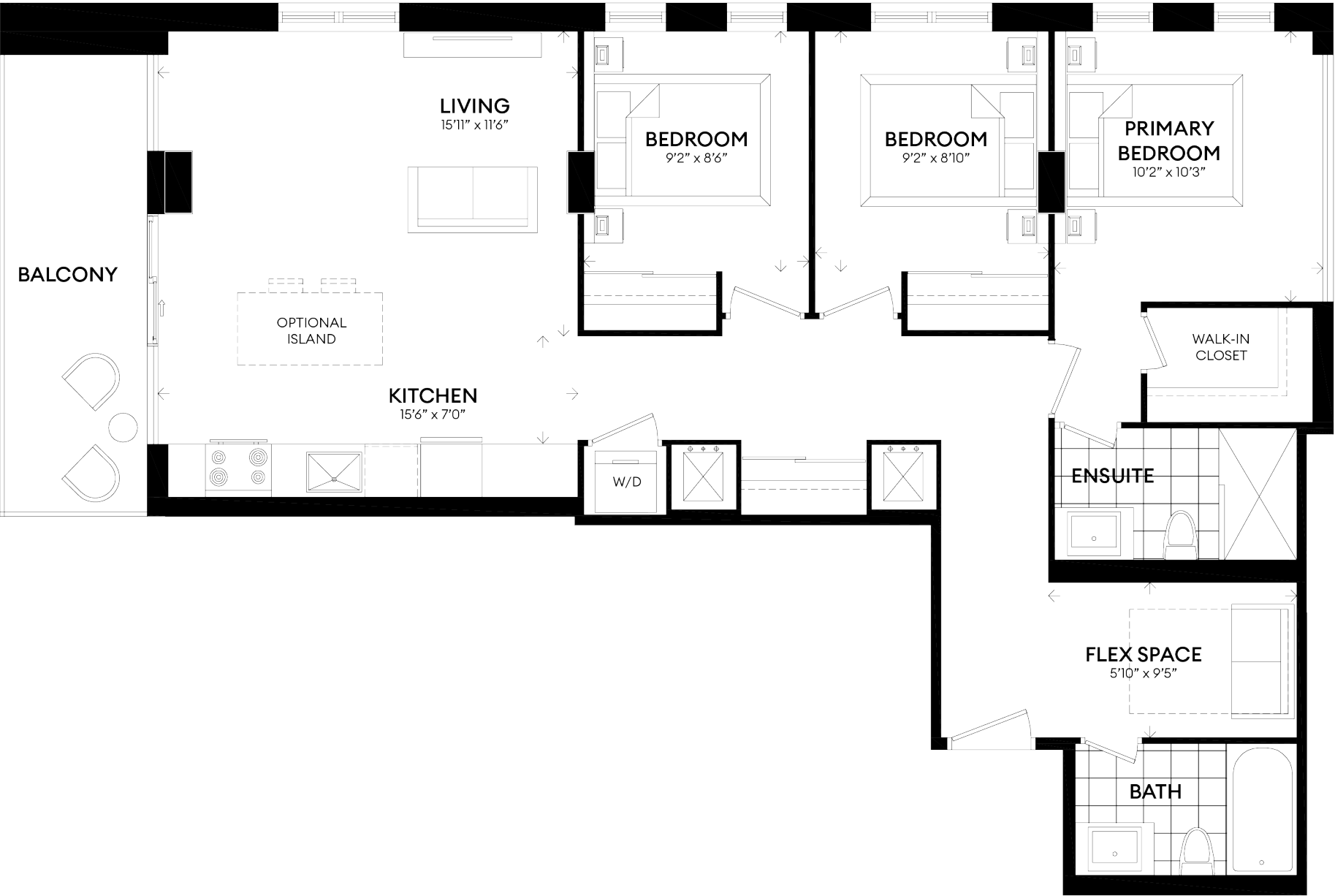
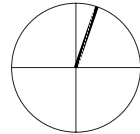
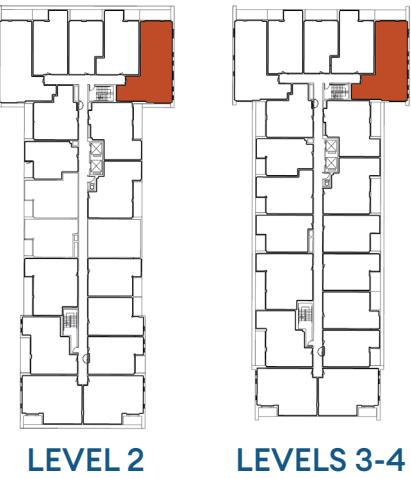
© 2021 Monde Development Group Inc. Project names and logos are Trademarks of their respective owners. All rights reserved. Building and views not to scale. All dimensions are approximate and subject to normal construction variances. Dimensions may exceed the usable floor area. Some features and finishes herein are upgrades or are for illustrative purposes only and may not be available. Furniture is displayed for illustration purposes only and does not necessarily reflect the electrical plan for the suite. Suites are sold unfurnished. Balcony, terrace, and façade variations may apply. Contact a sales representative for further details. Furniture, BBQs, and planter locations of balconies or terraces are for illustration purposes only and subject to change. Illustrations are artist's concepts only. Mondria 1 address, 1607 King St. E subject to change pending city approvals. Sizes and specifications subject to change without notice. E. & O.E. May 2021

TOMMASSO

UNITS 215-318-418

SUITE 1092 ft²
BALCONY 100 ft²

3 BEDROOMS
FLEX SPACE
2 BATHROOMS



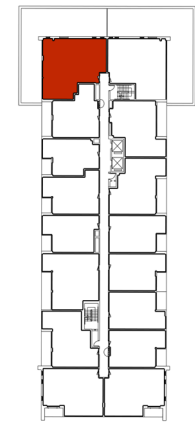
© 2021 Monde Development Group Inc. Project names and logos are Trademarks of their respective owners. All rights reserved. Building and views not to scale. All dimensions are approximate and subject to normal construction variances. Dimensions may exceed the usable floor area. Some features and finishes herein are upgrades or are for illustrative purposes only and may not be available. Furniture is displayed for illustration purposes only and does not necessarily reflect the electrical plan for the suite. Suites are sold unfurnished. Balcony, terrace, and façade variations may apply. Contact a sales representative for further details. Furniture, BBQs, and planter locations of balconies or terraces are for illustration purposes only and subject to change. Illustrations are artist's concepts only. Mondria 1 address, 1607 King St. E subject to change pending city approvals. Sizes and specifications subject to change without notice. E. & O.E. May 2021

D'HAMIDI

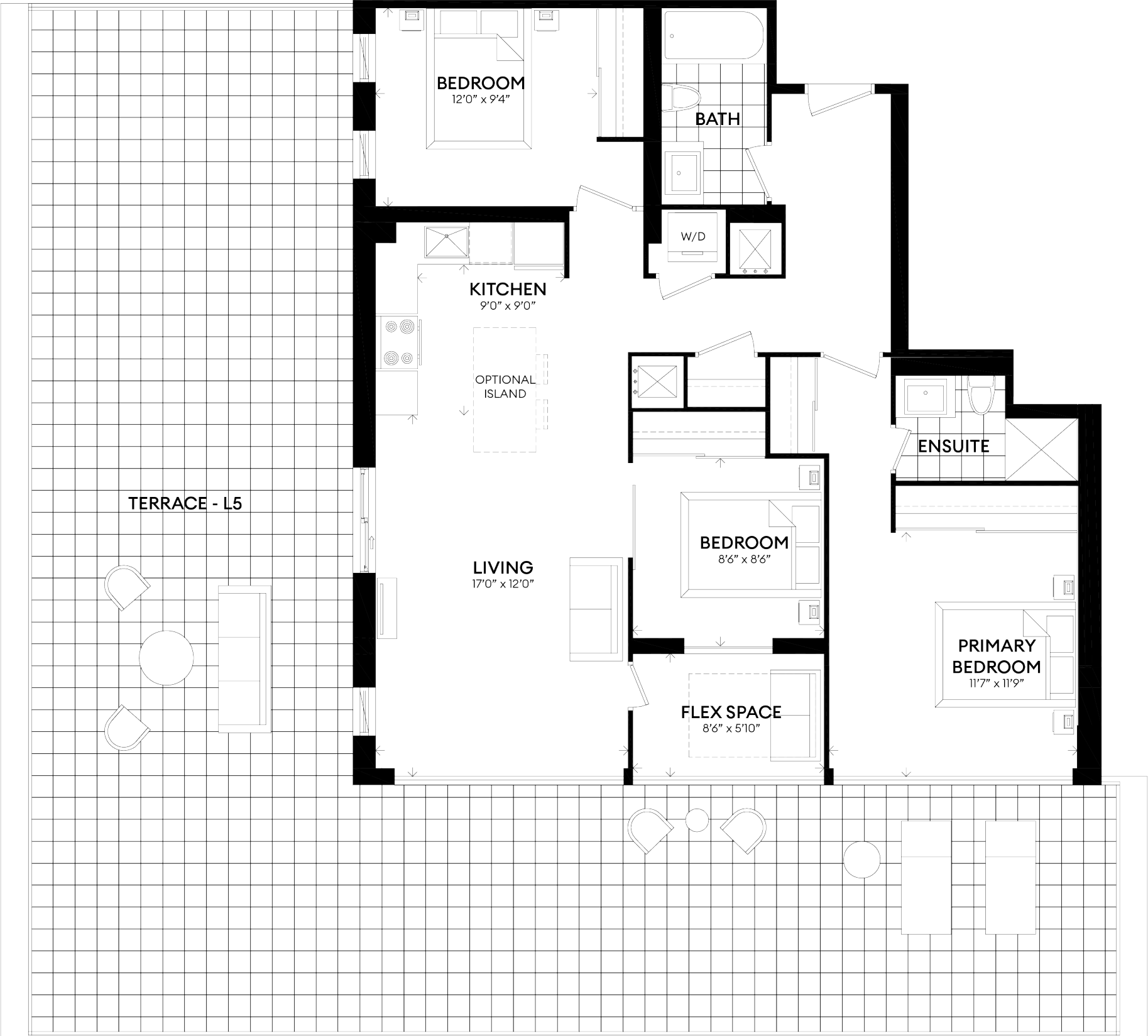
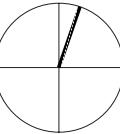
UNIT 514

SUITE 1126 ft²
TERRACE 1184 ft²

3 BEDROOMS
FLEX SPACE
2 BATHROOMS



LEVEL 5



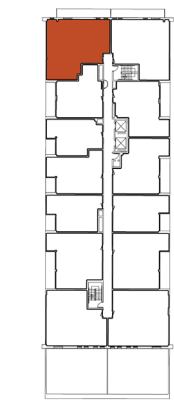
© 2021 Monde Development Group Inc. Project names and logos are Trademarks of their respective owners. All rights reserved. Building and views not to scale. All dimensions are approximate and subject to normal construction variances. Dimensions may exceed the usable floor area. Some features and finishes herein are upgrades or are for illustrative purposes only and may not be available. Furniture is displayed for illustration purposes only and does not necessarily reflect the electrical plan for the suite. Suites are sold unfurnished. Balcony, terrace, and façade variations may apply. Contact a sales representative for further details. Furniture, BBQs, and planter locations of balconies or terraces are for illustration purposes only and subject to change. Illustrations are artist's concepts only. Mondria 1 address, 1607 King St. E subject to change pending city approvals. Sizes and specifications subject to change without notice. E. & O.E. May 2021

GONCHAROVA

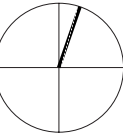
UNIT 611

SUITE 1126 ft²
BALCONY 147 ft²

3 BEDROOMS
FLEX SPACE
2 BATHROOMS



LEVEL 6



© 2021 Monde Development Group Inc. Project names and logos are Trademarks of their respective owners. All rights reserved. Building and views not to scale. All dimensions are approximate and subject to normal construction variances. Dimensions may exceed the usable floor area. Some features and finishes herein are upgrades or are for illustrative purposes only and may not be available. Furniture is displayed for illustration purposes only and does not necessarily reflect the electrical plan for the suite. Suites are sold unfurnished. Balcony, terrace, and façade variations may apply. Contact a sales representative for further details. Furniture, BBQs, and planter locations of balconies or terraces are for illustrtion pourposes only and subject to change. Illustrations are artist's concepts only. Mondria 1 address, 1607 King St. E subject to change pending city approvals. Sizes and specifications subject to change without notice. E. & O.E. May 2021



